

ROOKS COUNTY FREE FAIR, 2009

DIVISION 2 — BEEF

Superintendents: Larry Poore, David Pieper

Enter: Wednesday, August 12 (8:00 a.m. to 2:00 p.m.)
Judging: Thursday, August 13 (1:00 p.m.)
Release: Friday, August 14 (1:00 p.m.)

ALL OPEN CLASS MARKET STEERS

Enter: Wednesday, August 12 (weigh in from noon to 2:00 p.m.)
Judging: Thursday, August 13 (8:30 a.m., following 4-H Market Steers)
Release: Friday, August 14 (8:00 p.m.)

1. The recognized beef breeds will be as follows:

Class A – Hereford and Polled Hereford	Classes H, I, J, K – All Other Registered Breeds (class determined at entry time)
Class B – Angus	
Class C – Gelbvieh	
Class D – Charolais	Class L – Commercial Breeds (breeds will show together)
Class E – Simmental	
Class F – Limousin	
Class G – Salers	

2. Entries are due August 3, 2009. Mail to:

Rooks County Free Fair
Box 505
Stockton, KS 67669

Entries must include name and registration number of each animal entered.

3. **A copy of health papers must be signed by a licensed vet and accompany entry.**

4. No entry fee is required.

5. Cattle will be bedded on sand.

6. **Awards**

First place: \$15.00 and Blue ribbon
Second place: \$10.00 and Red ribbon
Third place: \$5.00 and White ribbon
Champion: Ribbon
Reserve Champion: Ribbon
Grand Champion: \$15.00 and Ribbon
Reserve Grand Champion: \$10.00 and Ribbon
Grand Champion Hereford Female: Trophy
Grand Champion Hereford Bull: Trophy
Supreme Champion Female: \$500.00
Supreme Reserve Female: \$250.00
Supreme Champion Bull: \$500.00
Supreme Reserve Bull: \$250.00

BREED CLASSES – CLASSES A-K

Exhibitors must have the original registration certificate on each animal available for inspection at the show. Class L does not need to be registered.

CLASSES A-K

Lot 1 – Junior heifer calves, calved March 1, 2009 and after
Lot 2 – Junior heifer calves, calved between Jan. 1, 2009 and Feb. 28, 2009
Lot 3 – Junior Heifer Calf Champion (Lots 1 and 2)
Lot 4 – Reserve Junior Heifer Calf Champion
Lot 5 – Late senior heifer calves, calved between Nov. 1 and Dec. 31, 2008
Lot 6 – Early senior heifer calves, calved between Sept. 1 and Oct. 31, 2008
Lot 7 – Senior Heifer Calf Champion (Lots 5 and 6)
Lot 8 – Reserve Senior Heifer Calf Champion
Lot 9 – Late summer yearling heifers, calved between July 1 and Aug. 31, 2008
Lot 10 – Early summer yearling heifers, calved between May 1 and June 30, 2008
Lot 11 – Intermediate Champion (Lots 9 and 10)
Lot 12 – Reserve Intermediate Champion
Lot 13 – April junior yearling heifers, calved between April 1 and April 30, 2008
Lot 14 – March junior yearling heifers, calved between March 1 and March 31, 2008
Lot 15 – Early junior yearling heifers, calved between Jan. 1 and Feb. 28, 2008
Lot 16 – Late senior yearling female, calved between Nov. 1 and Dec. 31, 2007
Lot 17 – Early senior yearling female, calved between Sept. 1 and Oct. 31, 2007
Lot 18 – Cow/calf
Lot 19 – Champion Yearling Heifer
Lot 20 – Reserve Champion Yearling Heifer
Lot 21 – Grand Champion Female
Lot 22 – Reserve Grand Champion Female
Lot 30 – Junior bull calves, calved March 1, 2009 and after
Lot 31 – Junior bull calves, calved between Jan. 1, 2009 and Feb. 28, 2009
Lot 32 – Junior Bull Calf Champion (Lots 30 and 31)
Lot 33 – Reserve Junior Bull Calf Champion
Lot 34 – Late senior bull calves, calved between Nov. 1 and Dec. 31, 2008
Lot 35 – Early senior bull calves, calved between Sept. 1 and Oct. 31, 2008
Lot 36 – Senior Bull Calf Champion (Lots 34 and 35)
Lot 37 – Reserve Senior Bull Calf Champion
Lot 38 – Late summer yearling bulls, calved between July 1 and Aug. 31, 2008
Lot 39 – Early summer yearling bulls, calved between May 1 and June 30, 2008
Lot 40 – Intermediate Champion Bull (Lots 38 and 39)
Lot 41 – Reserve Intermediate Champion Bull
Lot 42 – April junior yearling bulls, calved between April 1 and April 30, 2008

- Lot 43 — March junior yearling bulls, calved between March 1 and March 31, 2008
- Lot 44 — Early junior yearling bulls, calved between Jan. 1 and Feb. 28, 2008
- Lot 45 — Junior Champion Bull (Lots 42, 43, and 44)
- Lot 46 — Reserve Junior Champion Bull
- Lot 47 — Senior yearling bulls, calved between Sept. 1 and Dec. 31, 2007
- Lot 48 — Summer senior yearling bulls, calved between May 1 and Aug. 31, 2007
- Lot 49 — 2-year-old bulls, calved between Jan. 1 and April 30, 2007
- Lot 50 — All bulls over 2 years old
- Lot 52 — Senior Champion Bull (Lots 47, 48, and 49)
- Lot 53 — Reserve Senior Champion Bull
- Lot 54 — Grand Champion Bull
- Lot 55 — Reserve Grand Champion Bull (Champions and Reserve Champions competing)
- Lot 60 — Get-of-sire (4 animals by 1 sire, shown in the above lots, both sexes represented, no ownership requirement)
- Lot 61 — Junior get-of-sire (3 animals by 1 sire, both sexes represented, shown in Lots 1, 2, 5, 6, 9, 10, and 30, 31, 34, 35, 38, and 39)
- Lot 62 — Breeder 6 head (the exhibitor must be the breeder and first owner of the animal exhibited in individual classes; the breeder and first owner must have the same member code)

MARKET CLASS – CLASS M

1. Read “General Rules and Regulations” at the beginning of the Open Class section of the Fair Book.
2. The top five blue-ribbon steers from the Rooks County 4-H show will automatically be entered. All other Open Class steers need to enter on an Open Class Livestock Entry Form.
3. No heifers to be entered in the Market Steer class.
4. The show will follow the 4-H show, which begins at 8:00 a.m. Thursday. Release Friday at 8:00 p.m.
5. At the discretion of the Superintendents, Market Steers may be divided into 2 or more equal lots according to weight. Final division will be made after all entries are weighed and entered.
6. Animals must be born after Jan. 1 of the previous year.

CLASS M

Lot 1 — Market steer

AWARDS

Grand Champion: \$100.00 and Ribbon
 Reserve Grand Champion: \$75.00 and Ribbon
 Third place: \$60.00 and Ribbon
 Fourth place: \$40.00 and Ribbon
 Fifth place: \$30.00 and Ribbon



Registered Limousin

Liberty Ranch

Codell, KS

Progressive, Total Performance

Purebred, Black, and Red Polled Limousin
 Registered Red Angus, Halfblood Limousin Red Angus

“The Carcass Breed”

Feel free to stop by and visit us
 at the Rooks County Fair!

<p>Mike Smith (785) 885-4882</p>	<p>Roger Comeau (785) 434-4686</p>
---	---

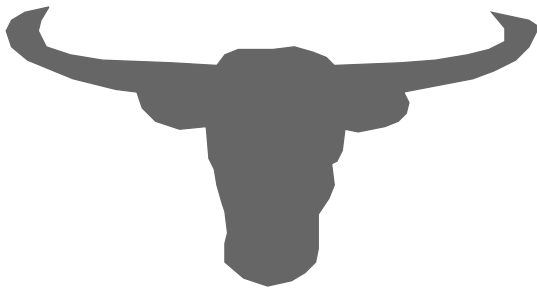
Headquarters
(785) 885-4881

Good Luck to All the 4-H'ers!

*A special thanks
 to all our past customers!*

Visitors Always Welcome



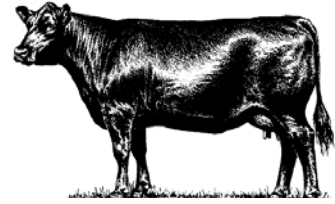
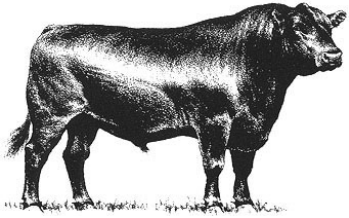


Plainville Livestock, LLC

**GARY GILLUM
TY GILLUM**

Sale Every Saturday

**Sale Barn: (785) 688-4080
907 NW Third St. • Plainville, KS 67663**



KATS

LAND & CATTLE

★ for all your cattle needs ★

Buying, Selling, and Herd Appraisals

Contact Sherlyn Kats

Home: (785) 425-6507

Cell: (785) 543-7185

Large & Small Animals

Central Veterinary Services, P.A.



Craig Iwanski, D.V.M.

Jessica Iwanski, D.V.M.

Shannon Hessler, D.V.M.

Herd Health Management

Cow/Calf/Feedlot Consulting

Surgery Boarding

Dentistry Grooming

Radiology Ultrasound

Science Diet Food Purina Equine Feed

Large Animal Haul-In Facility

24-Hour Emergency Service

406 Main Street
Stockton, KS 67669

Ph: (785) 425-5100

Kensington Lockers, Inc.

Custom slaughtering Monday & Wednesday –
contact Wayne Beckman

Complete processing

"From the Pen to the Pan"

Home-grown beef and pork for sale

Several homemade specialties

Retail meat case

Phone: 476-2834

Highway 36

Clip here

611 S. Washington
Plainville, KS
(785) 434-7232



307 W. Main
Stockton, KS
(785) 425-6461

Any medium specialty at regular price —
any other medium single topping for **\$3.99**

Good on pan, thin & crispy

Effective Aug. 9-15, 2009

**THE
ANIMAL
HOSPITAL**

710 S. Washington
Plainville, KS 67663
Phone: (785) 434-7222

Small Animal & Large Animal
Complete Medical Care

A.D. KELLY, D.V.M.


*Grooming, Boarding
Diagnostic Laboratory
Herd Health Consultation*



Hrabe Farms

Club Calves

Dean, Marcia, Courtney & Cody Hrabe
Gene and Rita Hrabe



1545 16 Rd.
STOCKTON, KS 67669
(785) 425-6022
Mobile: (785) 432-0895

hrabefarms@ruraltel.net

Towns herefords

Palco, KS 67657

Bulls and replacement females developed
to meet your straight and crossbreeding needs

Welcome to Visit Anytime

Therean and Mary
(785) 737-4045

3¼ miles south of Palco

BALANCED PERFORMANCE




**Good luck
to all exhibitors
at the Fair!**

EAT BEEF

**Rooks County KLA
Kansas Livestock Association**

schneider Ranch

Custom Cattle Feeding



Dwight Schneider
(785) 425-6876

Sutor Hereford Farms
Zurich, KS 67663

Registered Herefords
Ranch Phone
(785) 737-5755

Darrell and Joy Sutor, owners

Darrell Sutor
630 AA Rd.
Zurich, KS 67663
(785) 737-5711

Dana Pieper
400 DD Rd.
Palco, KS 67657
(785) 737-2830

